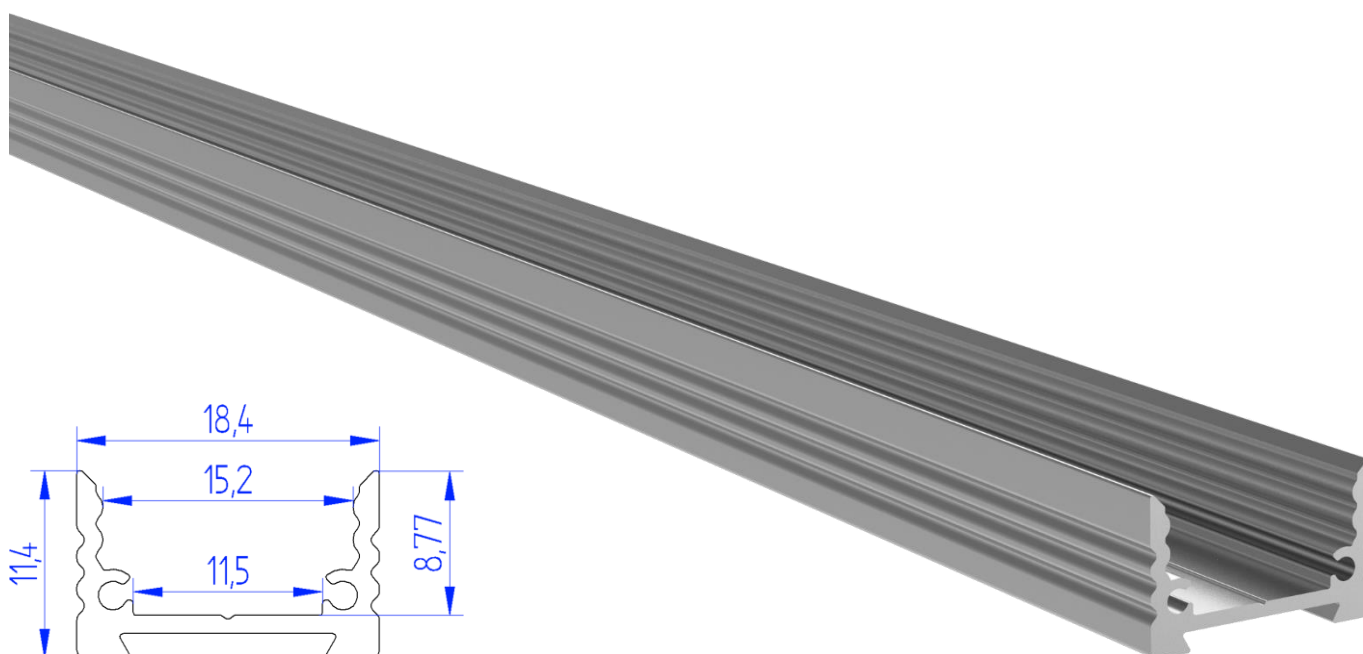




CD12 EDGE LIGHT ALUMINIUM PROFILE



Innovative design of profile and cover.

Made of a strong and durable aluminium alloy, natural-colour anodized by default.

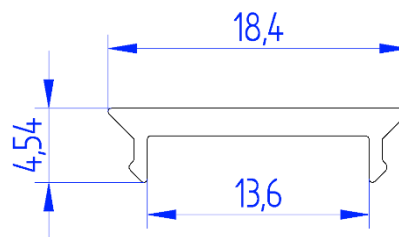
On a special request RAL powder coating is available.

Dedicated for use as a main, general lighting or accent, decorative lighting.

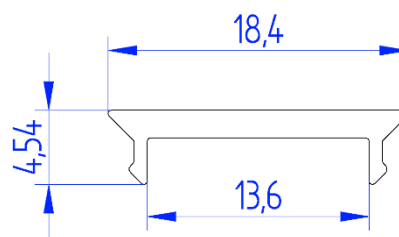
Thanks to Ecoedge plastic cover, the side rims are completely invisible.

LED PROFILE					
Article number	LT21-57309-CD12*1	LT21-57309-CD12*2	LT21-57309-CD12*3	LT21-57309-CD12*5	LT21-57309-CD12*6
Length [mm]	1000	2000	3000	5000	6000
Width [mm]	18,4				
Height [mm]	11,4				
Material	Aluminium				
Finish	Anodised				
Weight [g]	148	296	444	740	888

EDGE LIGHT COVERS

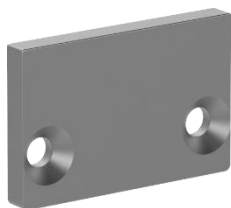


OPAL					
Article number	LT21-P334801003-CD0^1	LT21-P334801003-CD0^2	LT21-P334801003-CD0^3	LT21-P334801003-CD0^5	LT21-P334801003-CD0^6
Length [mm]	1000	2000	3000	5000	6000
Width [mm]	18,4				
Height [mm]	4,54				
Material	PC				
Transmission [%]	65				
Weight [g]	43	86	129	215	258

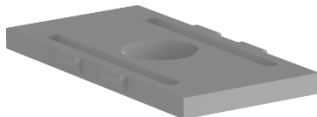


FROSTED					
Article number	LT21-P334801003-CDF^1	LT21-P334801003-CDF^2	LT21-P334801003-CDF^3	LT21-P334801003-CDF^5	LT21-P334801003-CDF^6
Length [mm]	1000	2000	3000	5000	6000
Width [mm]	18,4				
Height [mm]	4,54				
Material	PC				
Transmission [%]	75				
Weight [g]	43	86	129	215	258

INSTALLATION AND ACCESSORIES



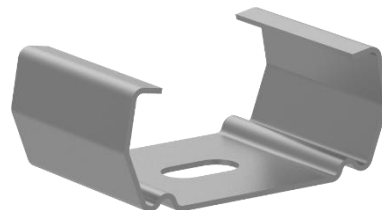
LT21121803CD12PP



LT62399419UCH2CD



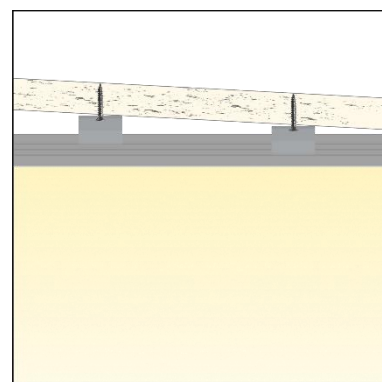
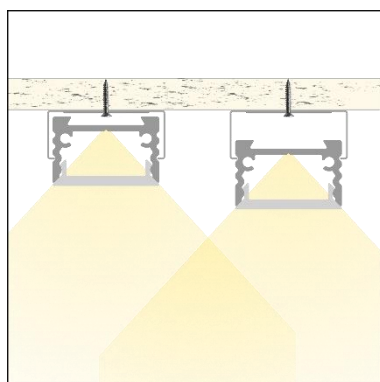
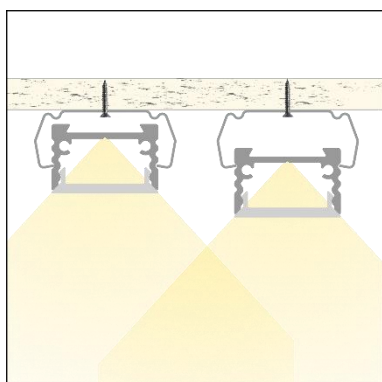
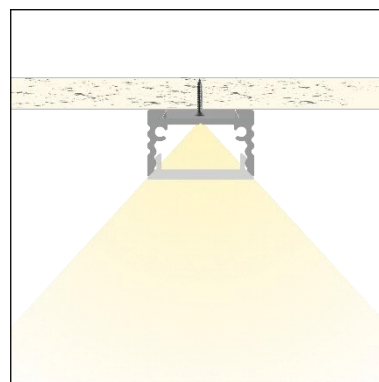
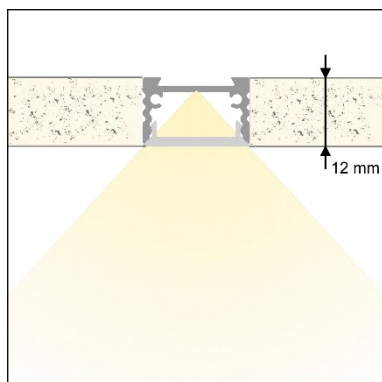
LT2150990090BDCD



LT2150990190BDCDHRF

ACCESSORIES				
Type	ENDCAP	MOUNTING CLIPS		
Article number	LT21121803CD12PP	LT62399419UCH2CD	LT2150990090BDCD	LT2150990190BDCDHRF
Description	2pcs FULL PLASTC END CAP + 4pcs SCREWS	2pcs PLASTIC MOUNTING + 2pcs SCREWS	2pcs METAL MOUNTING BRACKET + 2pcs SCREWS	2pcs METAL MOUNTING BRACKET HRF + 2pcs SCREWS
Length [mm]	2	24,2	12	14
Width [mm]	18,4	13	19,3	20,8
Height [mm]	12	2,4	8	9,1
Material	PLASTIC		METAL	
Weight [g]	0,4	0,6	0,8	1,6

INSTALLATION SOLUTION



General:

If order is made for series with the appropriate volume, it is possible to quote anodizing or painting profiles in other colors, but it does not apply to individual pieces.

LED profiles are made especially to adapt LED strips approved for that purpose. When combined with additional accessories (covers, endcaps, inserts etc.) LED luminaires are made, which then are used for general lighting or accent lighting. They do not serve emergency or safety lighting in particular.

Whole component is mounted with appropriate holders/suspensions, which are offered as accessories. When using brackets, recommended quantity is 3 per linear meter, considering stable and straight mounting surface. Number of required brackets may differ depending on a surface and local conditions. In that case it can be also needed to replace supplied screws/plugs with the ones adequate to the conditions. Brackets must not be bent during an assembly, as it can have a great impact on their holding force. It is possible that, because of the conditions, using provided holders would be impractical. Fortunately the profile can be screwed directly to the substrate. What is important – in any of the chosen method, installer must ensure that the assembly is held securely.

Keep in mind that the profile dimensions change due to thermal influences, so enough space must be left for this purpose.

The installation manuals for the LED strips and power supplies must be considered separately.

The profile is to be installed exclusively like shown in a situations above.

Covers:

Thermal expansion of covers (PMMA and PC) is higher than of aluminium, which means that light slits may be visible at the ends or between the covers, especially when the unit is not at its operating temperature.

Cover must be clipped along its entire length into the holding groove of profile, provided especially for that purpose. Installer must ensure, that the assembly is held securely.

Alcohol-based detergents are not recommended for cleaning, as they remove plasticizers from the plastic profiles and cause them to lose flexibility and form cracks, even after the installation. The recommended way of cleaning is with use of soft cloth and clear water.